



SMART
BLANKS

2025

WWW.SMARTEXAPPAREL.COM



MISSION STATEMENT

At Smart Blanks, our mission is to deliver essential pieces that make a lasting impact. We are dedicated to providing our customers with high-quality fabrics, modern designs, and precision in fit—all at an accessible price. Guided by our core values of comfort, consistency, and style, we create apparel that combines fashion-forward appeal with uncompromising quality. We are committed to empowering our customers with essentials that look great, feel exceptional, and stand the test of time.



— THE — DIFFERENCE

Smart Blanks sets itself apart by putting comfort and quality at the forefront of everything we create. Our signature ring-spun combed cotton, available across an extensive product line from essential tees to premium fleece, is crafted to enhance every customization technique—whether printing, embroidery, or advanced design. With a focus on superior softness and durability, Smart Blanks offers a premium foundation for brands looking to elevate their apparel with unmatched quality and versatility.

Our Promise:

- **Customer Commitment:** We build lasting partnerships, ensuring that every interaction makes a meaningful impact. At Smart Blanks, you're not just another customer.
- **Unmatched Quality:** Our commitment to delivering exceptional apparel, paired with outstanding service, ensures every product reflects superior craftsmanship and personalized care.
- **Integrity:** We uphold the highest standards of honesty and ethical business practices in everything we do.

At Smart Blanks, we offer more than just apparel—we create a luxury brand experience for those who value craftsmanship, quality, and strong relationships.

TERMS & CONDITIONS

PAYMENT & SHIPPING TERMS

We are pleased to offer free shipping on eligible orders over \$200. For your convenience, most orders placed by 2 PM are shipped the same day.

****DISCLAIMER:** Free shipping is excluded from orders with discounted pricing.

We accept credit card, company checks, and cashier's checks. Please make checks payable to Smartex Apparel. Term payments are offered for buyers that are approved by our credit department or that have built sufficient credit history with Smart Blanks. Please e-mail assistant@smartexapparel.com for more details.

Terms are offered on a 15 or 30-day basis.

PRICING

We do not have a minimum order quantity, allowing you the flexibility to order according to your specific needs.

Smart Blanks offers a tiered pricing model with generous pricing and freight discounts based on quarterly sales. Our sales team will work closely with each customer to create the best pricing plan possible. Prices are subject to change based on raw material costs or availability.

GARMENT SPECIFICATIONS

We strive to bring our customers a quality product that keeps up with changing trends. Occasionally, we will adjust and update our garment specifications. Smart Blanks ships by the "first in, first out" practice. Please contact customer service for any questions.

A full-page photograph of two men standing side-by-side against a plain, light-colored background. The man on the left has dark, wavy hair and a beard, wearing a light grey crewneck sweatshirt and matching sweatpants, with black sneakers featuring a teal stripe. The man on the right has dark, curly hair and a goatee, wearing a cream-colored crewneck sweatshirt and matching sweatpants, with white sneakers. A semi-transparent white rectangular box is centered over the image, containing text.

— PRIVATE LABEL —

At Smart Blanks, we believe in empowering brands to bring their unique visions to life. Our private label production program is designed for those who aspire to create distinctive, high-quality apparel that embodies their brand's essence. From concept to completion, our expert team collaborates closely with your creative staff to develop products that exceed your expectations.

With an array of services, including custom dyeing, screen printing, embroidery, personalized labels, and tailored packaging, we make it easy to craft pieces that reflect your brand's identity with unmatched precision and quality. Together, let's build a product line that's authentically yours, delivering impact and leaving a lasting impression in every detail.



— CONTACT US —

HOURS OF OPERATION / CALIFORNIA DISTRIBUTION CENTER

Monday-Friday

8:00 AM - 4:30 PM PST

3340 E. La Palma Avenue

Anaheim, CA 92806

HOURS OF OPERATION / TEXAS DISTRIBUTION CENTER

Monday-Friday

8:00 AM - 4:30 PM CST

1133 W. Carrier Pkwy

Grand Prairie, TX 75050

CALL US

Main Office: (714) 771-2149

E-MAIL US

Customer Service: support@smartexapparel.com

Sales: sales@smartexapparel.com

Billing: assistant@smartexapparel.com

TABLE OF CONTENTS

ADULT PREMIUM TEE	7-8	ADULT VINTAGE WASHED	
ADULT PREMIUM CVC TEE	9-10	HOODIE	35-36
ADULT EVERYDAY TEE	11-12	ADULT PREMIUM 9OZ	
MEN'S HEAVY TEE	13-14	HOODIE	37-38
ADULT VINTAGE		ADULT PREMIUM 9OZ	
WASHED TEE	15-16	ZIP HOODIE	39
ULTRA PREMIUM		ADULT PREMIUM 9OZ	
7.7 OZ TEE	17-18	CREW SWEATSHIRT	40
ADULT LONG SLEEVE TEE	19	ADULT PREMIUM	
MEN'S HEAVY LONG		12OZ HOODIE	41-42
SLEEVE TEE	20	ADULT PREMIUM 12OZ	
MEN'S ESSENTIAL TANK	21-22	FASHION HOODIE	43
RELAXED FIT		ADULT PREMIUM 12OZ	
CROPPED TEE	23-24	CRW SWTSHIRT	44
WOMEN'S ESSENTIAL TEE	25	ADULT PREMIUM 12OZ	
WOMEN'S ESSENTIAL		SWEATPANTS	45-46
V-NECK TEE	26	PREMIUM HEAVYWEIGHT	
WOMEN'S CROPPED		ADULT CREW SWEATSHIRT	47
HOODIE	27-28	PREMIUM HEAVYWEIGHT	
ADULT ESSENTIAL		ADULT FASHION HOODIE	48
HOODIE	29-30	YOUTH ESSENTIAL TEE	49-50
ADULT ESSENTIAL		YOUTH ESSENTIAL HOODIE	51-52
ZIP UP HOODIE	31-32	YOUTH ESSENTIAL ZIP UP	
ADULT ESSENTIAL CREW		HOODIE	53
SWEATSHIRT	33-34	YOUTH JOGGER	54
		STYLE SPECIFICATIONS	55-56



ADULT PREMIUM TEE

STYLE 402

Experience superior quality with our premium side-seam tee, expertly crafted from 100% combed ring-spun cotton for exceptional softness and durability. With a lightweight 4.3 oz fabric and a retail fit, this tee offers a refined, contemporary silhouette. Available in 2 heather blends—light heathers at 90% cotton/10% polyester and dark heathers at 60% cotton/40% polyester—providing style and versatility.



STYLE 402

SIZES AVAILABLE

XS S M L XL 2X 3X

PRODUCT DETAILS

12 PER PACK/72PCS. IN A BOX
SIDE-SEAM | RETAIL FIT | 30 SINGLES
4.3 OZ FABRIC | ORIGIN: BANGLADESH
100% COMBED RING-SPUN COTTON
LIGHT HEATHERS: 90% COTTON/10% POLY |
DARK HEATHERS: 60% COTTON/40% POLY
TEAR AWAY LABEL

ADULT PREMIUM CVC TEE

STYLE 403

Our premium tee is now available in a CVC color selection, quickly becoming a favorite within the industry. Recognized among the top brands nationwide, it exemplifies superior quality and craftsmanship.

60% COMBED RING-
SPUN
COTTON

40% POLYESTER





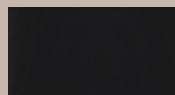
STYLE 403

PRODUCT DETAILS

12 PER PACK/72PCS. IN A BOX
 SIDE-SEAM | RETAIL FIT | 30 SINGLES
 4.3 OZ FABRIC | ORIGIN: BANGLADESH
 60% COMBED RING-SPUN COTTON/40% POLY
 TEAR AWAY LABEL

SIZES AVAILABLE

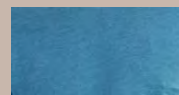
XS S M L XL 2X 3X



BLACK



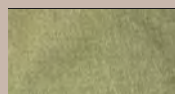
CLAY HTR



LAGOON HTR



SLATE HTR



MILITARY
HTR



DEEP PURPLE
HTR



MAUVE HTR



SAGE HTR



DUSTY
LAVENDER



ADULT EVERYDAY TEE

STYLE 501

Made from soft, ring-spun combed cotton and featuring a lightweight 4.3 oz design, this tee delivers a premium touch enhanced by an enzyme wash for extra softness. Its retail fit, tubular construction, and shoulder taping provide both comfort and style, while the tear-away label simplifies customization.

STYLE 501

PRODUCT DETAILS

12 PER PACK/72PCS. IN A BOX
TUBULAR | RETAIL FIT | 30 SINGLES
4.3 OZ FABRIC | ORIGIN: BANGLADESH
100% COMBED RING-SPUN COTTON
LIGHT HEATHERS: 90% COTTON/10%
POLY DARK HEATHERS: 60% COTTON/40% POLY
TEAR AWAY LABEL

SIZES AVAILABLE

XS S M L XL 2X 3X



MEN'S HEAVY TEE

STYLE M1200

Each tee boasts a durable 1" collar and is made with 6 oz. ring-spun combed cotton, ensuring unmatched comfort and softness. The superior printability makes these tees the perfect canvas for customization, while the tear-away label adds convenience for branding or personal use.



STYLE M1200

PRODUCT DETAILS

12 PER PACK/48PCS. IN A BOX
TUBULAR | 20 SINGLES | TEAR AWAY LABEL
6 OZ FABRIC | ORIGIN: BANGLADESH
100% COMBED RING-SPUN COTTON
LIGHT HEATHERS: 90% COTTON/10% POLY
DARK HEATHERS: 60% COTTON/40% POLY



SIZES AVAILABLE





ADULT VINTAGE WASHED TEE

STYLE PD200

Featuring our ring-spun cotton in a vintage wash, this style brings each piece an individual and unique character that is accomplished through our garment dyeing process.

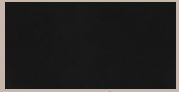
100% COMBED RING-
SPUN
COTTON

STYLE PD200

PRODUCT DETAILS

12 PER PACK/48PCS. IN A BOX
SIDE-SEAM | RELAXED FIT | PIGMENT DYED
5.5 OZ FABRIC | ORIGIN: BANGLADESH
100% COMBED RING-SPUN COTTON
TEAR AWAY LABEL

***PLEASE NOTE THAT OUR PIGMENT-DYED CLOTHING WILL EXPERIENCE VARIATIONS IN COLOR. DUE TO THE NATURE OF THE DYEING PROCESS, EACH PIECE IS UNIQUELY DYED, WHICH CAN RESULT IN DIFFERENCES IN SHADE AND INTENSITY.



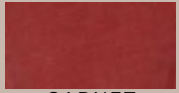
BLACK



TAN



FOREST



GARNET



DENIM



SILVER

SIZES AVAILABLE

S

M

L

XL

2X

3X





ADULT PREMIUM 7.7 OZ TEE

STYLE UH77

Introducing the Adult Heavy Weight Tee—crafted with 100% premium ring-spun cotton for unmatched softness and durability. With its bold, oversized fit, this tee brings iconic streetwear style to life, making it the ultimate essential for those who want to elevate their look.

100% COMBED RING-
SPUN
COTTON



STYLE UH77

PRODUCT DETAILS

12 PER PACK/36PCS. PER BOX
1" COLLAR | 7.7 OZ. FABRIC HEAVYWEIGHT |
OVERSIZED FIT | RING SPUN COMBED COTTON
| SIDE-SEAM | SUPERIOR PRINTABILITY |
TEAR AWAY LABEL

*****PLEASE NOTE THAT OUR PIGMENT-DYED CLOTHING WILL EXPERIENCE VARIATIONS IN COLOR. DUE TO THE NATURE OF THE DYEING PROCESS, EACH PIECE IS UNIQUELY DYED, WHICH CAN RESULT IN DIFFERENCES IN SHADE AND INTENSITY.**

SIZES AVAILABLE





STYLE 1401

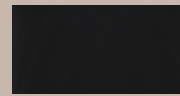
ADULT LONG SLEEVE TEE

PRODUCT DETAILS

12 PER PACK/72PCS. IN A BOX
TUBULAR | RETAIL FIT | 30 SINGLES
4.3 OZ FABRIC | ORIGIN: BANGLADESH
100% COMBED RING-SPUN COTTON
LIGHT HEATHERS: 90% COTTON/10% POLY DARK
HEATHERS: 60% COTTON/40% POLY
TEAR AWAY LABEL

SIZES AVAILABLE

XS S M L XL 2X 3X



BLACK



CHARCOAL HTR



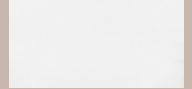
HTR GREY



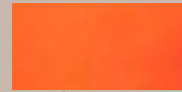
ROYAL



RED



WHITE



SAFETY
ORANGE



NAVY

STYLE M1250

MEN'S HEAVY LONG SLEEVE

PRODUCT DETAILS

12 PER PACK/48PCS. IN A BOX
TUBULAR | 20 SINGLES | TEAR AWAY LABEL
6 OZ FABRIC | ORIGIN: BANGLADESH
100% COMBED RING-SPUN COTTON
LIGHT HEATHERS: 90% COTTON/10% POLY
DARK HEATHERS: 60% COTTON/40% POLY

SIZES AVAILABLE





MEN'S ESSENTIAL TANK

STYLE T100

Elevate your apparel lineup with our men's tank, expertly crafted with an updated modern fit for a refined, classic look. Made from our signature ring-spun combed cotton, this tank provides a premium surface, ideal for DTG, screen printing, and a variety of design applications.

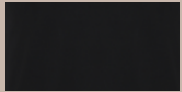
STYLE T100

PRODUCT DETAILS

12 PER PACK/72PCS. IN A BOX
TUBULAR | RETAIL FIT | TEAR AWAY LABEL
5 OZ FABRIC | ORIGIN: BANGLADESH
100% COMBED RING-SPUN COTTON
LIGHT HEATHERS: 90% COTTON/10% POLY
DARK HEATHERS: 60% COTTON/40% POLY

SIZES AVAILABLE

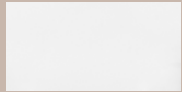
S M L XL 2X 3X



BLACK



CHARCOAL HTR



WHITE



HTR GREY





**RELAXED FIT
CROPPED TEE**

STYLE 4003

Unbelievably
comfortable and
effortlessly versatile—
pairs seamlessly with
anything in your
wardrobe.



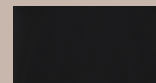
STYLE 4003

PRODUCT DETAILS

12 PER PACK/72PCS. IN A BOX
SIDE-SEAM | COMFORT FIT | 30 SINGLES
4.3 OZ FABRIC | ORIGIN: BANGLADESH
100% COMBED RING-SPUN COTTON
Light Heathers: 90% Cotton / 10% Poly
Dark Heathers: 60% Cotton / 40% Poly
TEAR AWAY LABEL



BABY PINK



BLACK



WHITE



DUST



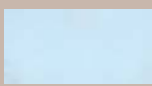
DEEP
PURPLE
HTR



HTR
GREY



MAUVE
HTR



POWDER BLUE

SIZES AVAILABLE

XS S M L XL



WOMEN'S ESSENTIAL TEE

STYLE 4001

PRODUCT DETAILS

12 PER PACK/72PCS. IN A BOX
SIDE-SEAM | TRUE TO SIZE | 30 SINGLES

4.3 OZ FABRIC | ORIGIN: BANGLADESH

100% COMBED RING-SPUN COTTON

LIGHT HEATHERS: 90% COTTON/10% POLY

DARK HEATHERS: 60% COTTON/40% POLY

TEAR AWAY LABEL

SIZES AVAILABLE

- XS
- S
- M
- L
- XL
- 2X
- 3X

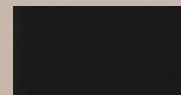


STYLE 4002

WOMEN'S ESSENTIAL V-NECK TEE

PRODUCT DETAILS

12 PER PACK/72PCS. IN A BOX
SIDE-SEAM | TRUE TO SIZE
4.3 OZ FABRIC | ORIGIN: BANGLADESH
100% COMBED RING-SPUN COTTON
LIGHT HEATHERS: 90% COTTON/
10% POLY | DARK HEATHERS:
60% COTTON/40% POLY
TEAR AWAY LABEL



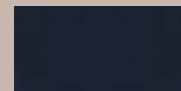
BLACK



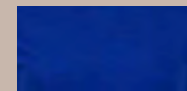
CHARCOAL HTR



HTR GREY



NAVY



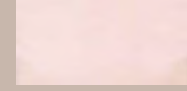
ROYAL



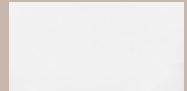
TURQUOISE



RED



BABY PINK



WHITE

SIZES AVAILABLE

- XS
- S
- M
- L
- XL
- 2X
- 3X



WOMEN'S CROPPED HOODIE

STYLE 4150

Made from soft, 7.8 oz mid-weight 80/20 fleece, this hoodie offers cozy warmth with a sleek, cropped silhouette. Thoughtfully designed with a 2-panel hood, matching draw cord, and a tear-away label, it's perfect for effortless style and easy customization.



STYLE 4150

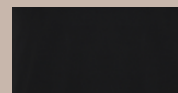
PRODUCT DETAILS

6 PER PACK/24PCS. IN A BOX
COMFORT FIT | MATCHING DRAWCORD

7.8 OZ FABRIC | RAW HEM

80% RING-SPUN COTTON / 20% POLY
LIGHT HEATHERS: 90% COTTON / 10% POLY

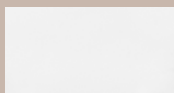
TEAR AWAY LABEL
ORIGIN: PAKISTAN



BLACK



HTR GREY



WHITE



RED



DUST

SIZES AVAILABLE

XS

S

M

L

XL



ADULT ESSENTIAL HOODIE

STYLE 101

Our top-selling hoodie is now available in a wide selection of over 25 colors, offering even more options to suit your style.



SIZES AVAILABLE



STYLE 101

PRODUCT DETAILS

6 PER PACK/24PCS. IN A BOX
 3 PANEL HOODIE | COMFORT FIT | 7.8 OZ FABRIC
 HALF MOON NECK PATCH | MATCHING DRAWCORD
 80% COMBED RING-SPUN COTTON / 20% POLY
 LIGHT HEATHERS: 90% COTTON / 10% POLY
 DARK HEATHERS: 60% COTTON / 40% POLY
 TEAR AWAY LABEL
 ORIGIN: PAKISTAN

*** 4XL AND 5XL AVAILABLE IN BLACK WHITE
 H GREY | CHARCOAL HTR | NAVY RED | ROYAL

ADULT ESSENTIAL ZIP UP HOODIE

STYLE 102

Experience the perfect blend of comfort and style with our mid-weight fleece zip hoodie.

Featuring an 80/20 fleece blend, this design includes a 3-panel hood, kangaroo pocket, matching draw cord, and matching zipper for a polished look. Complete with a half moon neck patch and tear-away label, it's ideal for customization.





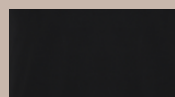
STYLE 102

PRODUCT DETAILS

6 PER PACK/24PCS. IN A BOX
3 PANEL HOODIE | COMFORT FIT
7.8 OZ FABRIC | HALF MOON NECK PATCH
MATCHING DRAWCORD | MATCHING ZIPPER
80% COMBED RING-SPUN COTTON/20% POLY
LIGHT HEATHERS: 90% COTTON/10% POLY
DARK HEATHERS: 60% COTTON/40% POLY
TEAR AWAY LABEL
ORIGIN: PAKISTAN

SIZES AVAILABLE

XS S M L XL 2X 3X



BLACK



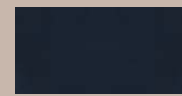
CHARCOAL HTR



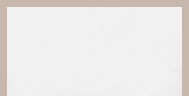
HTR GREY



ROYAL



NAVY



WHITE



RED



A woman with long, dark, wavy hair and bangs is wearing a white crewneck sweatshirt. She is looking slightly to the side with a neutral expression. The background is a plain, light-colored wall. The sweatshirt has a simple, clean design with a crewneck collar and ribbed cuffs and hem. She is also wearing dark blue denim jeans.

ADULT ESSENTIAL CREW SWEATSHIRT

STYLE 103

Discover premium comfort and versatility with our 7.8 oz mid-weight fleece, crafted from a soft combed ring-spun cotton blend. Featuring a half-moon neck patch and a tear-away label, it's perfect for customization. Available in multiple fabric blends, including 80/20, 90/10, and 60/40 cotton-poly options, tailored to suit any style or project.



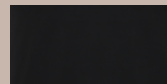
STYLE 103

PRODUCT DETAILS

6 PER PACK/24PCS. IN A BOX
 HALF MOON NECK PATCH | 7.8 OZ FABRIC
 80% COMBED RING-SPUN COTTON/20% POLY
 LIGHT HEATHERS: 90% COTTON/10% POLY
 DARK HEATHERS: 60% COTTON/40% POLY
 TEAR AWAY LABEL
 ORIGIN: PAKISTAN

SIZES AVAILABLE

XS S M L XL 2X 3X



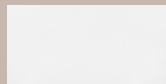
BLACK



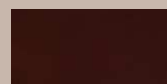
CHARCOAL HTR



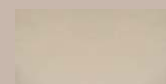
HTR GREY



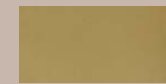
WHITE



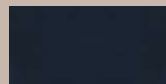
CHOCOLATE



SAND



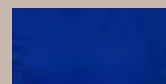
KHAKI



NAVY



RED



ROYAL



SAGE HTR



SLATE HTR



LAGOON HTR



NAVY HTR



ADULT VINTAGE WASHED HOODIE

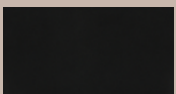
STYLE PD1000

Combining our signature ring-spun cotton with a vintage wash for a timeless, worn-in look. Each piece boasts a unique character thanks to a specialized garment-dyeing process, making it a customer favorite for style and comfort.

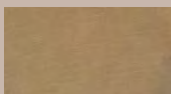
100% COMBED RING-
SPUN
COTTON



STYLE PD1000



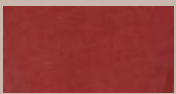
BLACK



TAN



FOREST



GARNET



DENIM



SILVER

SIZES AVAILABLE

S

M

L

XL

2X

3X

PRODUCT DETAILS

6 PER PACK/24 PCS. IN A BOX
9 OZ HEAVY-WEIGHT FLEECE | 80/20 FLEECE
3-PANEL HOOD | KANGAROO POCKET |
MATCHING DRAW CORD
TEAR AWAY LABEL

*** PLEASE NOTE THAT OUR PIGMENT-DYED CLOTHING WILL EXPERIENCE VARIATIONS IN COLOR. DUE TO THE NATURE OF THE DYEING PROCESS, EACH PIECE IS UNIQUELY DYED, WHICH CAN RESULT IN DIFFERENCES IN SHADE AND INTENSITY.



ADULT PREMIUM 9 OZ HOODIE

STYLE 7001

Upgrade your wardrobe with our 9 oz 3-end fleece hoodie, offering exceptional softness and durability. Featuring a 2-panel hood, shoelace drawcord, and half-moon neck patch, this hoodie blends premium quality with modern style. Made from a 60/40 combed ring-spun cotton-poly blend, with light (90/10) and dark (60/40) heather options, and a tear-away label for easy customization.



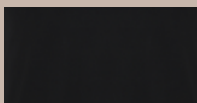
STYLE 7001

SIZES AVAILABLE

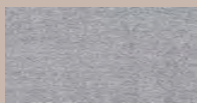
- XS
- S
- M
- L
- XL
- 2X
- 3X

PRODUCT DETAILS

6 PER PACK/24PCS. IN A BOX
 3 END FLEECE | 2 PANEL HOODIE | 9 OZ FABRIC
 HALF MOON NECK PATCH | SHOELACE DRAWCORD
 60% COMBED RING-SPUN COTTON/40% POLY
 LIGHT HEATHERS: 90% COTTON/10% POLY
 COTTON FACE FOR PREMIUM PRINT QUALITY
 TEAR AWAY LABEL
 ORIGIN: PAKISTAN



BLACK



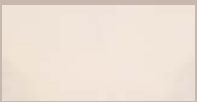
GRAPHITE HTR



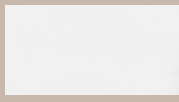
HTR GREY



CLAY



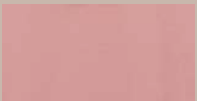
DUST



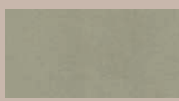
WHITE



RED



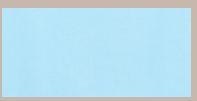
MAUVE



FROSTY GREEN



ADMIRAL BLUE

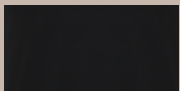


CAROLINA BLUE



STYLE 7002

ADULT PREMIUM 90Z ZIP HOODIE



BLACK

PRODUCT DETAILS

6 PER PACK/24PCS. IN A BOX
2 PANEL HOODIE | SHOELACE DRAWCORD
METAL ZIPPER | 3 END FLEECE | TEAR AWAY LABEL
9 OZ FABRIC | HALF MOON NECK PATCH
60% COMBED RING-SPUN COTTON/40% POLY
COTTON FACE FOR PREMIUM PRINT QUALITY
ORIGIN: PAKISTAN

SIZES AVAILABLE

S

M

L

XL

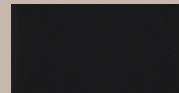
2X

3X



STYLE 7003

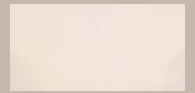
ADULT PREMIUM 90Z CREW SWEATSHIRT



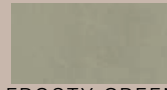
BLACK



HTR GREY



DUST



FROSTY GREEN



MAUVE



CLAY

PRODUCT DETAILS

6 PER PACK/24PCS. IN A BOX

3 END FLEECE | HALF MOON NECK PATCH

9 OZ FABRIC | TEAR AWAY LABEL

60% COMBED RING-SPUN COTTON/40% POLY
COTTON FACE FOR PREMIUM PRINT QUALITY

ORIGIN: PAKISTAN

SIZES AVAILABLE

S

M

L

XL

2X

3X



ADULT PREMIUM 12OZ HOODIE

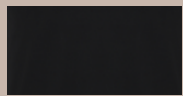
STYLE 8001

Experience unmatched warmth and style with our 12 oz 3-end fleece hoodie. Featuring a refined 2-panel hood, durable shoelace drawcord, and a tear-away label for seamless customization, this hoodie is designed for both comfort and versatility.

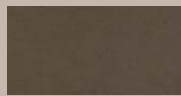




STYLE 8001



BLACK



DESERT TAUPE



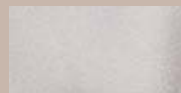
RELAXED GREY



BONE



SPACE GREY



STONE

PRODUCT DETAILS

6 PER PACK/12PCS. IN A BOX

2 PANEL HOODIE | 3 END FLEECE | 12 OZ FABRIC

SHOELACE DRAWCORD | TEAR AWAY LABEL

60% COMBED RING-SPUN COTTON/40% POLY

ORIGIN: PAKISTAN

SIZES AVAILABLE

S

M

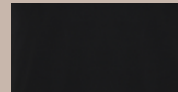
L

XL

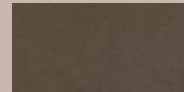
2X

3X

4X



BLACK



DESERT TAUPE



RELAXED GREY



BONE



SPACE GREY



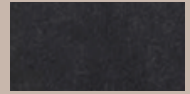
STONE



VINTAGE
DUSTY
BLUE



VINTAGE SAGE



ASH BLACK



STYLE 8005

ADULT PREMIUM 12OZ FASHION HOODIE

PRODUCT DETAILS

6 PER PACK/12PCS. IN A BOX

2 PANEL HOODIE | 3 END FLEECE | 12 OZ FABRIC

NO DRAWCORD | TEAR AWAY LABEL

60% COMBED RING-SPUN COTTON/40% POLY

ORIGIN: PAKISTAN

*** PLEASE NOTE THAT OUR PIGMENT-DYED CLOTHING WILL EXPERIENCE VARIATIONS IN COLOR. DUE TO THE NATURE OF THE DYEING PROCESS, EACH PIECE IS UNIQUELY DYED, WHICH CAN RESULT IN DIFFERENCES IN SHADE AND INTENSITY.

SIZES AVAILABLE

S

M

L

XL

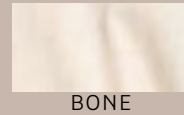
2X

3X

4X



BLACK



BONE



DESERT
TAUPE



RELAXED GREY



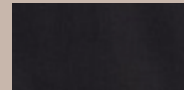
SPACE GREY



STONE



VINTAGE
SAGE



ASH
BLACK



VINTAGE
DUSTY
BLUE

SIZES AVAILABLE

S

M

L

XL

2X

3X

4X

STYLE 8003

ADULT PREMIUM 12 OZ CREW SWEATSHIRT

PRODUCT DETAILS

6 PER PACK/12PCS. IN A BOX
3 END FLEECE | HALF MOON NECK PATCH
12 OZ FABRIC | TEAR AWAY LABEL
60% COMBED RING-SPUN COTTON/40% POLY
HEAVY WEIGHT FLEECE
ORIGIN: PAKISTAN

*** PLEASE NOTE THAT OUR PIGMENT-DYED CLOTHING WILL EXPERIENCE VARIATIONS IN COLOR. DUE TO THE NATURE OF THE DYEING PROCESS, EACH PIECE IS UNIQUELY DYED, WHICH CAN RESULT IN DIFFERENCES IN SHADE AND INTENSITY.





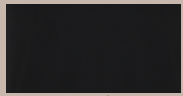
**ADULT
PREMIUM
12OZ
SWEATPANTS**

STYLE 8004

Discover the perfect balance of comfort and functionality with our 12 oz 3-end fleece sweatpants. Designed with two front pockets, elastic cuffs, and an elastic waistband for a secure fit, they feature a durable shoelace drawcord and a tear-away label for easy customization. Crafted from a 60/40 combed ring-spun cotton-poly blend, these joggers offer premium quality and style.

STYLE 8004

SIZES AVAILABLE



BLACK



DESERT TAUPE



RELAXED GREY



BONE



SPACE GREY



STONE

PRODUCT DETAILS

6 PER PACK/12PCS.IN A BOX
2 FRONT POCKETS | 3 END FLEECE |
ELASTIC CUFF ELASTIC WAISTBAND |
12 OZ FABRIC | SHOELACE DRAWCORD
TEARAWAY LABEL
60% COMBED RING-SPUN COTTON/40% POLY
ORIGIN: PAKISTAN





STYLE 9003

PREMIUM HEAVYWEIGHT ADULT CREW SWEATSHIRT

PRODUCT DETAILS

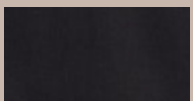
6 PER PACK/12PCS. IN A BOX

15.50 OZ HEAVY WEIGHT FRENCH TERRY

100% RING-SPUN COMBED COTTON

OVERSIZED FIT | DROP SHOULDER

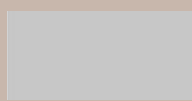
TEAR AWAY LABEL | HALF MOON PATCH



BLACK



NATURAL



COOL GREY



BURRO



CHAMBREY



OIL GREEN

SIZES AVAILABLE

S

M

L

XL

2X

3X

STYLE 9005

PREMIUM HEAVYWEIGHT ADULT FASHION HOODIE

PRODUCT DETAILS

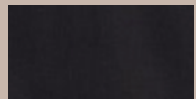
6 PER PACK/12PCS. IN A BOX

15.50 OZ HEAVY WEIGHT FRENCH TERRY

100% RING-SPUN COMBED COTTON

OVERSIZED FIT | DROP SHOULDER

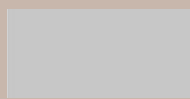
TEAR AWAY LABEL | HALF MOON PATCH



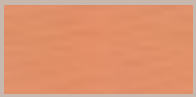
BLACK



NATURAL



COOL GREY



BURRO



CHAMBREY



OIL GREEN

SIZES AVAILABLE

S

M

L

XL

2X

3X





YOUTH ESSENTIAL TEE

STYLE 3502

Achieve the perfect blend of quality and style with our 4.3 oz side-seam tee. Featuring a retail fit and crafted from 100% combed ring-spun cotton, it offers exceptional softness and durability. Available in light heathers (90/10 cotton-poly) and dark heathers (60/40 cotton-poly), this premium tee includes a tear-away label for easy customization.



STYLE 3502

PRODUCT DETAILS

12 PER PACK/72PCS. IN A BOX
 SIDE-SEAM | RETAIL FIT | 30 SINGLES
 4.3 OZ FABRIC | ORIGIN: BANGLADESH
 100% COMBED RING-SPUN COTTON
 LIGHT HEATHERS: 90% COTTON/10% POLY
 DARK HEATHERS: 60% COTTON/40% POLY
 TEAR AWAY LABEL

SIZES AVAILABLE

- XS
- S
- M
- L
- XL



YOUTH ESSENTIAL HOODIE

STYLE 301

Discover understated style and comfort with our 7.8 oz 2-panel hoodie. Designed without a drawcord for a clean, modern look, it features a half moon neck patch and a tear-away label for easy customization. Crafted from an 80/20 combed ring-spun cotton-poly blend, with light heathers (90/10) and dark heathers (60/40), this hoodie is perfect for any occasion.

STYLE 301

PRODUCT DETAILS

6 PER PACK/24PCS. IN A BOX

2 PANEL HOODIE | NO DRAWCORD

7.8 OZ FABRIC | HALF MOON NECK PATCH

80% COMBED RING-SPUN COTTON/20% POLY

LIGHT HEATHERS: 90% COTTON/10%POLY

DARK HEATHERS: 60% COTTON/40% POLY

TEAR AWAY LABEL

ORIGIN: PAKISTAN

SIZES AVAILABLE

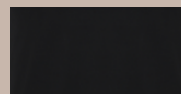
XS

S

M

L

XL



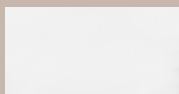
BLACK



CHARCOAL HTR



HTR GREY



WHITE



NAVY HTR



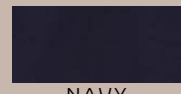
ROYAL



TURQUOISE



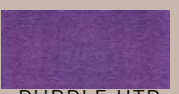
BURGUNDY



NAVY



FOREST



PURPLE HTR



RED



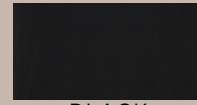
HOT PINK

STYLE 302

YOUTH ESSENTIAL ZIP UP HOODIE

PRODUCT DETAILS

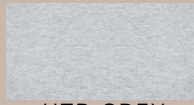
6 PER PACK/24PCS. IN A BOX
2 PANEL HOODIE | NO DRAWCORD
7.8 OZ FABRIC | HALF MOON NECK PATCH
MATCHING ZIPPER | TEAR AWAY LABEL
80% COMBED RING-SPUN COTTON/20% POLY
LIGHT HEATHERS: 90% COTTON/10%POLY
DARK HEATHERS: 60% COTTON/40% POLY
ORIGIN: PAKISTAN



BLACK



CHARCOAL HTR



HTR GREY



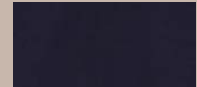
BURGUNDY



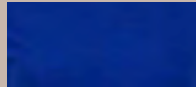
RED



HOT PINK



NAVY



ROYAL



TURQUOISE

SIZES AVAILABLE

XS

S

M

L

XL

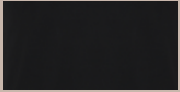


STYLE 350

YOUTH ESSENTIAL JOGGER

SIZES AVAILABLE

XS S M L XL



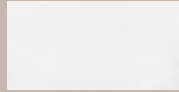
BLACK



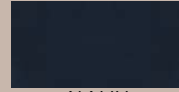
CHARCOAL HTR



HTR GREY



WHITE



NAVY



ROYAL



RED

PRODUCT DETAILS

6 PER PACK/24PCS. IN A BOX
2 FRONT POCKETS | 1 BACK POCKET | ELASTIC CUFF
ELASTIC WAISTBAND | 7.8 OZ FABRIC
MATCHING DRAWCORD | TEAR AWAY LABEL
80% COMBED RING-SPUN COTTON/20% POLY
LIGHT HEATHERS: 90% COTTON/10% POLY
DARK HEATHERS: 60% COTTON/40% POLY
ORIGIN: PAKISTAN



— STYLE SPECIFICATIONS —

STYLE 402, 403, 501

SIZE	XS	S	M	L	XL	2X	3X
CHEST	16	18	20	22	24	26	28
LENGTH	27	28	29	30	31	32	33

STYLE 4003

SIZE	XS	S	M	L	XL
CHEST	16	18	20	22	24
LENGTH	17	18	19	20	21

STYLE PD200, M1200

SIZE	S	M	L	XL	2X	3X	4X	5X
CHEST	18	20	22	24	26	28	30	32
LENGTH	28	29	30	32	33.5	35	36	37

STYLE 3502

SIZE	XS	S	M	L	XL
CHEST	12	14	16	18	19
LENGTH	18	20	22	24	26

STYLE T100

SIZE	S	M	L	XL	2X	3X
CHEST	18	20	22	24	26	28
LENGTH	28	29	30	31	32	33

STYLE 301, 302

SIZE	XS	S	M	L	XL
CHEST	14	15.5	17	18.5	20
LENGTH	17.5	19	20.5	22	23.5

STYLE 1401, M1250

SIZE	XS	S	M	L	XL	2X	3X	4X	5X
CHEST	16	18	20	22	24	26	28	30	32
LENGTH	27	28	29	30	31	32	33	34	35

STYLE 4150

SIZE	XS	S	M	L	XL
CHEST	19	21	23	25	27
LENGTH	17	18	19	20	21

STYLE 101, 102

SIZE	XS	S	M	L	XL	2X	3X	4X	5X
CHEST	19	20	22	24	26	28	30	32	34
LENGTH	26	27	28	29	30	31	32	33.5	35

— STYLE SPECIFICATIONS —

STYLE 8001, 8005

SIZE	S	M	L	XL	2X	3X	4X
CHEST	20.5	22.5	24.5	26.5	28.5	30.5	32
LENGTH	27	28	29	30	31	32	34

STYLE 4001, 4002

SIZE	XS	S	M	L	XL	2X	3X
CHEST	16	17	18	19	20	21	22
LENGTH	25	26	26.5	27	28	29	30

STYLE 8004

SIZE	S	M	L	XL	2X	3X	4X
WAIST	30	32	34	36	38	40	42
OUTSEAM	40	41	42	43	44	45	46
INSEAM	29	30	31	32	33	34	35

STYLE 350

SIZE	XS	S	M	L	XL
WAIST	21	22	24	26	28
OUTSEAM	29.5	32	33.5	34.5	37
INSEAM	20.25	22.5	23.5	25.25	27

STYLE 8003

SIZE	S	M	L	XL	2X	3X	4X
CHEST	20 1/2	22 1/2	24 1/2	26 1/2	28 1/2	30 1/2	32
LENGTH	27	28	29	30	31	32	34

STYLE 9003

SIZE	XS	S	M	L	XL	2X	3X	4X
CHEST	22	23	24	25	26	28	29	31
LENGTH	26	27	28	29	30	31	32	33

STYLE 103, 7003

SIZE	XS	S	M	L	XL	2X	3X
CHEST	19	20.5	22	23.5	25	26.5	28
LENGTH	25	26.5	28	29.5	31	32.5	34

STYLE 9005

SIZE	XS	S	M	L	XL	2X	3X	4X
CHEST	22	23	24	25	26 1/2	28	29 1/2	31
LENGTH	26	27	28	29	30	31	32	33



FOLLOW
— US —

 @smartblanks

 @smartexapparel

